



## Features

### Riviera Luxury

- Private elevator in each townhome
- Central air conditioning in each unit
- In-slab heating in the basement
- 3 bedrooms, den — 3 storey executive townhomes
- From 2300 sq. ft. of finished space
- 2 full and 2 half baths in each unit
- Built-in Entertainment and data network
- In-home video/audio security system
- State of the art stainless steel appliance package including:
  - Sub Zero fridge
  - Wolf dual fuel range
  - Built-in microwave drawer
  - Front load titanium coloured washer & dryer
- Stainless steel interior tall tub dishwasher with hidden controls
- 9 foot ceiling height on main & second floor
- 8 foot 5-panel smooth passage and swing closet doors throughout main
- Designer Fireplace in great room as per plan
- Sound bar (Resilient channel) for soundproofing of party walls
- Sprinkler system throughout for fire protection, including the garage
- Oversize 80 US-gallon hot water tank
- White Decora switches and plugs
- Central Vacuum system installed as per plan
- Garburator rough-in with switch receptacle

### Riviera Exteriors

- Grand front entry doors with a high definition profile
- Cement board siding with Smart board battens in a variety of colours or High performance Acrylic Imasco Stucco — as per plan
- Gas lines for future BBQ at rear
- Garage door opener with one transmitter
- Estate Style Stone Accent
- Architectural columns as per plan
- 40 year asphalt shingles
- Designer mail box and house numbers
- Custom black exterior lighting package
- 2 lawn services
- Front yard landscaped with trees in front & back

### Ambiante Verde

- High efficiency furnace with programmable thermostat
- High efficiency gas-fired hot water tank
- Energy star approved, double-glazed Low-E windows
- Energy star approved appliances
- Low VOC interior & exterior paint
- Rain barrel for exterior water collection & reuse

### Riviera Kitchen & Baths

- Maple, Oak, Alder, White or Antique custom cabinets in choice of stain, door style and hardware
- 42" high upper cabinets in the kitchen
- Island with flush breakfast bar — as per plan
- Soft closing drawers
- Contemporary full-height ceramic tile kitchen backsplash
- Pot lights throughout kitchen
- Kohler brushed nickel single-lever faucets including a pull-out faucet in the kitchen
- Full length mirrors over vanity tops and pedestal sinks

### Riviera Interior

- Hardwood floor and Ceramic tile throughout the main floor
- Patterned carpet installed over 8 lb underlay
- 6" high baseboards & 4" wide casing throughout the house
- Painted ceiling

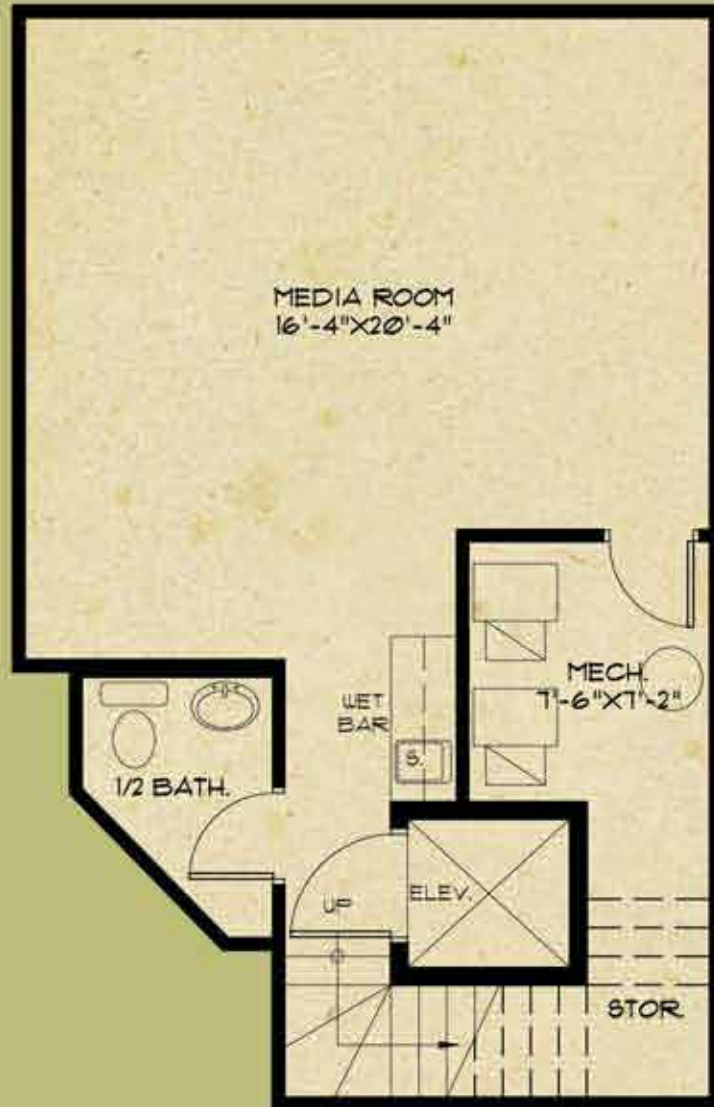
### Show Suite

Phone: 403-457-0828  
 Website: [www.rivieraonthebow.com](http://www.rivieraonthebow.com)  
 Email: [info@rivieraonthebow.com](mailto:info@rivieraonthebow.com)

### DaVinci Group of Companies

Head Office: 1912 26A Street SW  
 Calgary, Alberta T2E 2H7  
 Ph: 403-245-6669 / Fax: 403-245-6785  
[www.davincigroup.ca](http://www.davincigroup.ca)

**DaVinci Condominiums**  
[www.rivieraonthebow.com](http://www.rivieraonthebow.com)



**BASEMENT | 481 Sq. Ft.**



Artist's Concept

**TOTAL AREA  
 2441 Sq. Ft.**

NOTE: Floorplans, drawings and dimensions are approximate, and subject to change without notice. All designs are copyrighted.

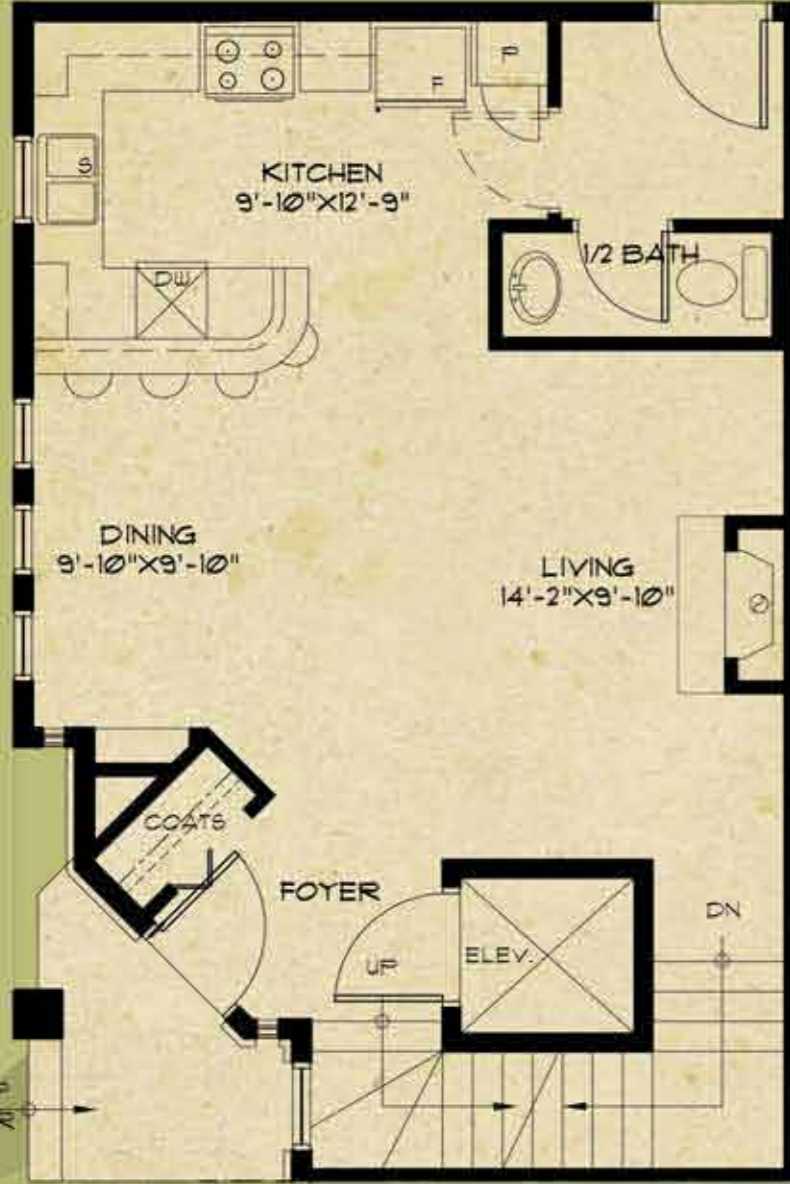
## RIVERVIEW



KEY PLAN

**DaVinci Condominiums**  
[www.rivieraonthebow.com](http://www.rivieraonthebow.com)

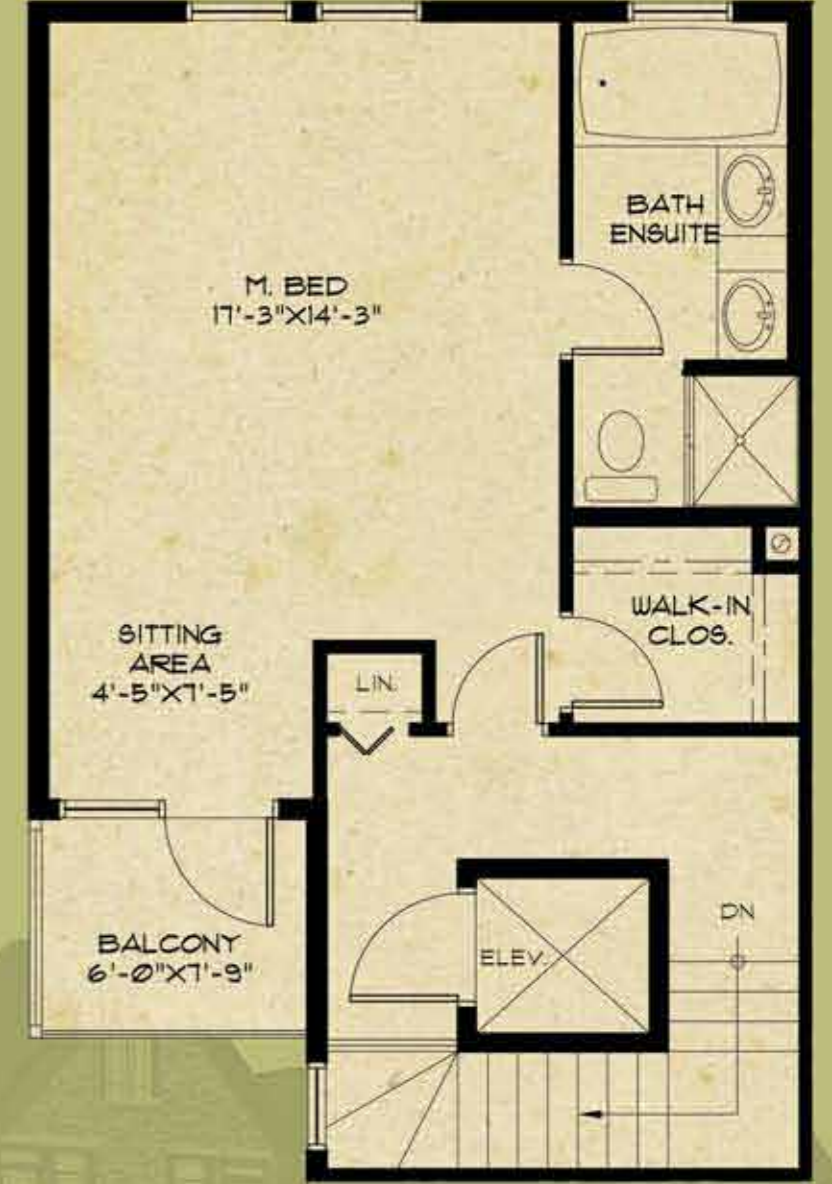




**MAIN FLOOR | 644 Sq. Ft.**



**SECOND FLOOR | 682 Sq. Ft.**



**THIRD FLOOR | 634 Sq. Ft.**